



Contents

Forthcoming Events	Page 1
Message from Miss Beach	Page 2
PTA Christmas Fair	Page 2
Confirmation of start times and breakfast club times from 31st October	Page 2
Bristol Best & Brilliant Treasure Hunt	Page 3
New Build Update	Page 3
Nuts in School	Page 3
Head Lice and Worms	Page 3
Pumpkin Carving for KS1 and KS2 children	Page 3
Spanish Club Years 1 - 4	Page 3
Bikes/Scooter Left Over the Half Term	Page 3

FORTHCOMING EVENTS

Monday 24th - Friday 28th October	Half term
Saturday 3rd December	Christmas Fair
Friday 16th December	Last day of term
Tuesday 3rd January	Inset Day
Wednesday 4th January	School returns
Monday 13th - Friday 17 February	Half term
Friday 31st March	School finishes for Easter
Monday 3rd - Friday 7th April	Inset Days for moving into the new school
Monday 24th April	Inset Day - families will be invited to view the new school (more details to follow)
Tuesday 25th April	School starts

Dear Families,

At the end of our first term, I'd like to thank you again for welcoming me and the rest of the new leadership team into school. This is a unique and wonderful place to work and it has been a pleasure getting to know you all.

Myself and Paula Shore had a really productive meeting with the class reps last Wednesday. Plenty of good discussions and some ideas to take forward to next term.

Confirmation of the tightening up of our start times are enclosed in this newsletter. Thank you for all your feedback.

We had an external review of the school on 12th October and I am hoping to share the recommendations, with class reps, as soon as possible after half term.

I will also be sending out a timetable for parents/ carers so that you can volunteer to read with some children after half term.

Have a wonderful half term.

Heather Beach
Acting Head of School



PTA CHRISTMAS FAIR

**Saturday 3rd December - 10am-2pm
Dolphin School Site**

Raising money to buy equipment for the school!

- Christmas trees
- Craft and gift stalls including a cake sale
- The theme this year is going to be 'Flavours of Christmas' - we would like families to contribute to a display of how different people celebrate (photographs, recipes etc)
- Volunteers will be needed to make this event happen - please sign up after half term
- Craft workshops will be happening at coffee morning (Wednesdays at Dolphin site) after half term
- Look out for more information after half term!

Confirmation of start times and breakfast club times from 31st October:

Fairlawne site:

Breakfast club gates open at 8am and shut at 8:10am.

Gates re-open at 8:30am

8:50am: the tambourine will ring and children will line up ready to go to class for a prompt 9am start. Please can we ask that parents allow the children to do this by moving away from the class lines when they hear the tambourine.

9am: The gate will shut and children arriving after this time will need to sign in at the Gatehouse.

9:20am: registers close.

Dolphin site:

Breakfast club gates open at 8am and shut at 8:10am.

Gates re-open at 8:30am

8:45am: classroom doors shut. Children arriving after this time will be marked as late and will need to go to the school office.

HAPPY MEMBERS OF THE WORLD COMMUNITY – HAPPY MEMBERS OF THE WORLD COMMUNITY
RESILIENCE – RESPECT – RESPONSIBILITY – CURIOSITY - RESILIENCE – RESPECT – RESPONSIBILITY – CURIOSITY

Bristol Best & Brilliant Treasure Hunt

Do you know your Cabot from your Cabbage? Come and enjoy some family fun with the Bristol Best & Brilliant treasure hunt on Gloucester Road. Over half term, 12 of our cities treasures will be hidden in the shop windows of Gloucester Road area. Can you find Banksy that our Year 1's created? Find all 12 clues and claim a prize! More information and a downloadable answer sheet is available at www.bishopstonmatters.co.uk

New Build Update

Some progress photos taken today:

- Year 3 classroom on the 1st floor (below)
- Early years classroom (bottom of page)
- Main circulation stairs, ready for floor finish
- New school reception taking shape



Nuts in School

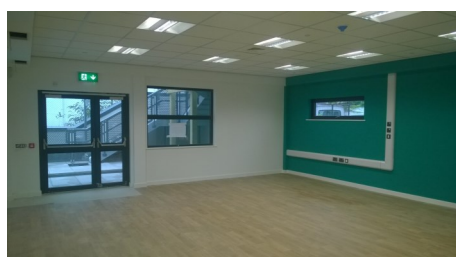
This is a reminder that we are a nut free school. Please do not give your child any nuts or nut products to bring into school. This includes for snacks and after school clubs.

Head Lice and Worms

To prevent an epidemic of head lice at school we would ask everyone to check their child's hair regularly. For more information visit: <http://www.nhs.uk/conditions/Head-lice/Pages/Introduction.aspx>

Washing hands thoroughly is important to prevent the spread of worms. Please emphasise the importance of this to your children. For more information visit:

<http://www.nhs.uk/Conditions/Threadworms/Pages/Introduction.aspx>



Pumpkin Carving for KS1 and KS2 children

We are holding a pumpkin carving event for KS1 and KS2 children, who will be accompanied by a parent or carer, for the duration of the event. This will take place on the first Monday back (31.10.2016) 3:20pm - 4:45pm in the upstairs hall at Fairlawn.

There is no need to book a place. Just come along with your fresh pumpkin. The school will provide the space, the inspiration, the prizes, the tools, the candle, the bags for the pulp, pumpkin recipes and some adult help. There will be prizes for each year group. The school will provide some pumpkins for demonstration purposes.

Any help in organising the event will be gratefully received. Please phone or email the school and ask for Paula Shore for further details.



Spanish Club Years 1-4

¡Hola a todos!

Ms Roberts is hoping to run an additional Spanish Club on Fridays after school (3.20pm – 4.30pm) at Fairlawn School starting in Term 2 on Friday 4 November. This would be open to Years 1-4. The cost of the Club will be £5.00 per session, payable in advance for the whole term.

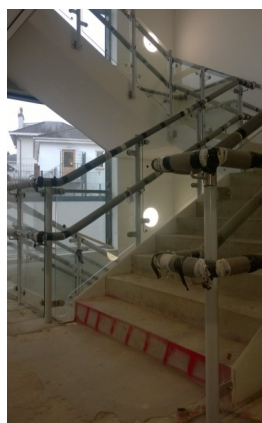
Please can you let Ms Roberts know via email at your earliest convenience whether your child would be interested in attending.

¡Muchas gracias!

Ms Roberts rroberts@dolphinschool.bristol.sch.uk

Bikes/Scooters Left Over Half Term

Please make sure you take all bikes, scooters and helmets home. Some have been left in school for a sustained period of time. Any left over half term will be taken inside for 2 weeks and if not claimed will then be recycled.



HAPPY MEMBERS OF THE WORLD COMMUNITY – HAPPY MEMBERS OF THE WORLD COMMUNITY
RESILIENCE – RESPECT – RESPONSIBILITY – CURIOSITY - RESILIENCE – RESPECT – RESPONSIBILITY – CURIOSITY